



SANITATION | PUMPS | HEATING

CATALOG

CUSTOM | REPAIR





SERVICE...It's What Makes the Difference.™

The Prestec Sales, Inc.™ DIFFERENCE

At Prestec Sales, Inc., the heart and soul of our success in establishing and growing long-term relationships with leading manufacturers, vendors, contractors, and YOU - our customer - lies in our belief that

SERVICE...It's What Makes The Difference.™

We know the importance of having continued support, and that is why Prestec Sales Inc. offers backing even after the sale is complete.

No matter what part of the process you are in, Prestec Sales Inc. has solutions to fulfill your plant sanitation parts and equipment needs.

2481 HILTON DRIVE, SUITE 7
GAINESVILLE, GA 30501
770-535-0930
WWW.PRESTECSALES.COM

TABLE OF CONTENTS

Click on the titles below to go directly to that page.
To view in browser, click here.

INTRODUCTION

<i>Product Line, Equipment, Parts & Services Overview</i>	2
---	---

SPECIALTY MANUFACTURED EQUIPMENT

<i>Custom Pump Systems</i>	6
<i>Overhead Lube Systems</i>	7
<i>High Pressure Pump Systems</i>	8
<i>Medium Pressure Pump Systems</i>	10
<i>Steam Heating Packages</i>	11
<i>Shackle Brushing Machines</i>	12
<i>Rotary Screen Water Reclaim Systems</i>	13
<i>Odor Control Systems</i>	14
<i>Central Foam Stations</i>	16
<i>Wall-mount Foamers</i>	17
<i>Gas-fired Heaters</i>	18

ELECTRICAL

<i>Control Panels</i>	19
-----------------------	----

SANITATION SUPPLIES

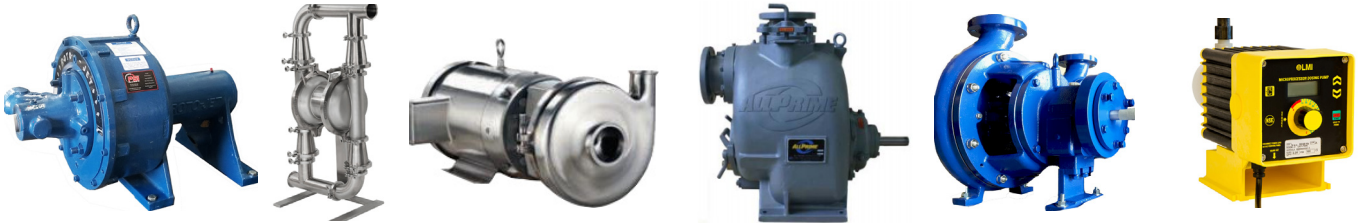
<i>Gates and Kuriyama Hoses</i>	20
<i>EZ-Blaster™ Spray Gun</i>	22
<i>EZ-Blaster™ TD-3 Spray Gun</i>	24
<i>Prestec Fittings Catalog & Other Resources</i>	26

Prestec Sales, Inc.™ Equipment, Parts & Services

PUMPS

Rebuild | Service | New

Roto-jet | Murzan | Ampco | All Prime | LMI | Truflor | ADP



HEATER SYSTEMS

Steam | Gas

Kemco | Pick | Komax



MOTORS, VFDs & ELECTRICAL

Prestec Sales | WEG



Valves

Spence | Terice | Flo-tite | DFT | DynaFluid



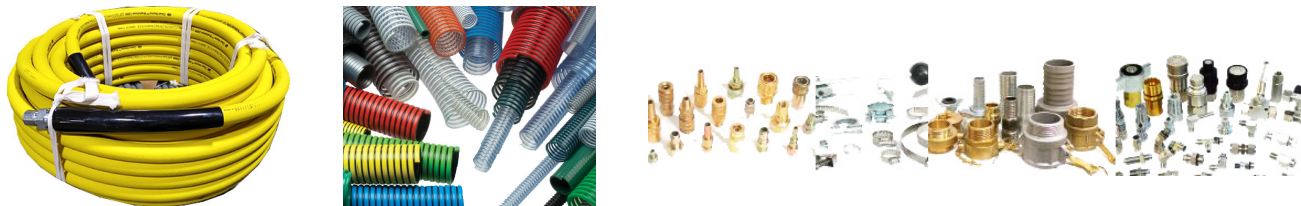
SANITATION SUPPLIES

Spray Guns | Nozzles | Fittings & Couplings



HOSES & FITTINGS

Gates | Kuriyama | PSI Hose Fittings & Accessories



OVERHEAD RAIL CARE

Track Cleaning Brush Assemblies | Shackle Brushing Machines | IS/OS Wheel Washers | Lube Tanks & Headers



PRESTEC FABRICATED EQUIPMENT

Central Foam Stations | Wall-mount Foamers | Odor Control | Process Systems | Steam Trains



Prestec Sales, Inc.™ offers a full line of sanitation equipment, parts, and supplies. With more than 30 years in the business, you can count on us to recommend products that perform effectively at a very competitive price. We pride ourselves on having inventory on the shelf that allows for same-day shipping in most cases. Let us show you the Prestec Sales, Inc. difference!

For more information on our products, please visit us online at www.prestecsales.com, or call 770-535-0930 to speak to one of our knowledgeable customer service associates.

WALL MOUNT FOAMERS



The Prestec Sales, Inc. wall mount foaming and sanitizer stations are stainless steel foam applicators which create an adherent mixture with excellent dwell time. With longer dwell times, detergents are able to penetrate and break down build-up on surfaces and eliminate hand cleaning.

Models include the PF1000-HP, PF1000-LP and the PCFS-75. The PF1000 series is available in high pressure (300-1,000 psi) and low pressure (60-300 psi) versions to accommodate a variety of uses. The PCFS-75 model is used in conjunction with the Prestec Central Foam System.

All units deliver a premixed detergent and water solution to the foaming station or a pre-existing pump fed system and will project 25-30 feet allowing for cleaning at various distances.

Included with the PF1000 series are assorted metering tips, air and water supply hose and vinyl tubing with Viton® foot valve. Prestec Sales, Inc. also offers accessories for the stations including 1/2" x 75-ft foam hoses, stainless steel hose hangers, PVC foam nozzles, and spray nozzles.

In addition to the Prestec Sales, Inc. units, we also carry the Lafferty Equipment line of foaming and sanitizing systems and accessories.

SHACKLE & TRACK BRUSHES



We carry 10" x 12" replacement shackle brushes with special grit-impregnated bristles for shackle brushing machines. Brushes can be custom fabricated to your specific needs.

Track brushing assemblies and replacement brush sets are also available for overhead conveyor lines.

HOSE REELS & ASSEMBLIES



Our high-pressure hoses are rated up to 3,000 psi and are animal-fat resistant with swivels on both ends. It's the perfect choice for poultry plant sanitation. Assemblies come in 50-, 75-, and 100-ft lengths and are regularly in stock. Diameter options include 3/8", 1/2", and 3/4".

If you require a special length or diameter, Prestec Sales, Inc. is happy to work with you to supply a custom-cut hose for your specific job. Red foam hose is available in a standard 75-ft assemblies and 700-ft lengths by the reel. For needs that demand hose in bulk, Prestec Sales, Inc. provides hose by-the-reel in various diameters and colors. Custom assemblies are available upon request.

NOZZLES & QUICK DISCONNECTS



Prestec Sales, Inc. stocks a wide selection of spray nozzles in stainless steel, brass and Kynar (plastic) options, and non-stock nozzles can arrive in a matter of days. If you need help sizing a nozzle, you can speak to one of our nozzle experts to help select the appropriate size for your application or process. Quick disconnects are available in 1/4", 3/8", 1/2" and 3/4" sizes in both brass and stainless steel construction.

TRIGGER GUNS



Prestec Sales, Inc. has a variety of trigger guns for most applications. We proudly offer guns with ergonomic designs, easy-pull triggers, and high-volume flow. Reduced flow options also available.

HOSE RACKS & REELS

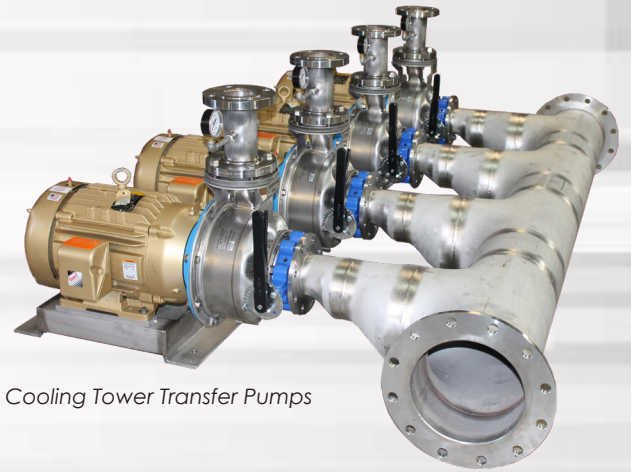


Prestec Sales, Inc. manufactures durable stainless steel hose hangers which stand up to use in even the toughest environments. Hangers are capable of storing up to 150 feet of 3/8" or 100 feet of 1/2" or 3/4" hose.

We also carry mountable stainless steel A-frame hose reels with easy-to-turn handles that are available in 8", 12", and 18" sizes. Reels come complete with stainless steel components.



Roto-jet® Pump System
with gas-fired heater
75 gpm @ up to 900 psi
Heater 75gpm with 100°F rise.



Cooling Tower Transfer Pumps

Custom Pump Systems

FEATURES & BENEFITS

Prestec Sales, Inc.™ offers custom pump systems tailored to your specifications. Our systems are built and assembled by our team of experts in Prestec's newly expanded 15,000 square-foot facility.

With production being done completely on-site, Prestec Sales ensures the highest level of quality and special features like built-in system controls can easily be included.

KEY BENEFITS

- Most systems are pre-piped for connection to customer utilities.



Overhead Conveyor Lube Systems

FEATURES & BENEFITS

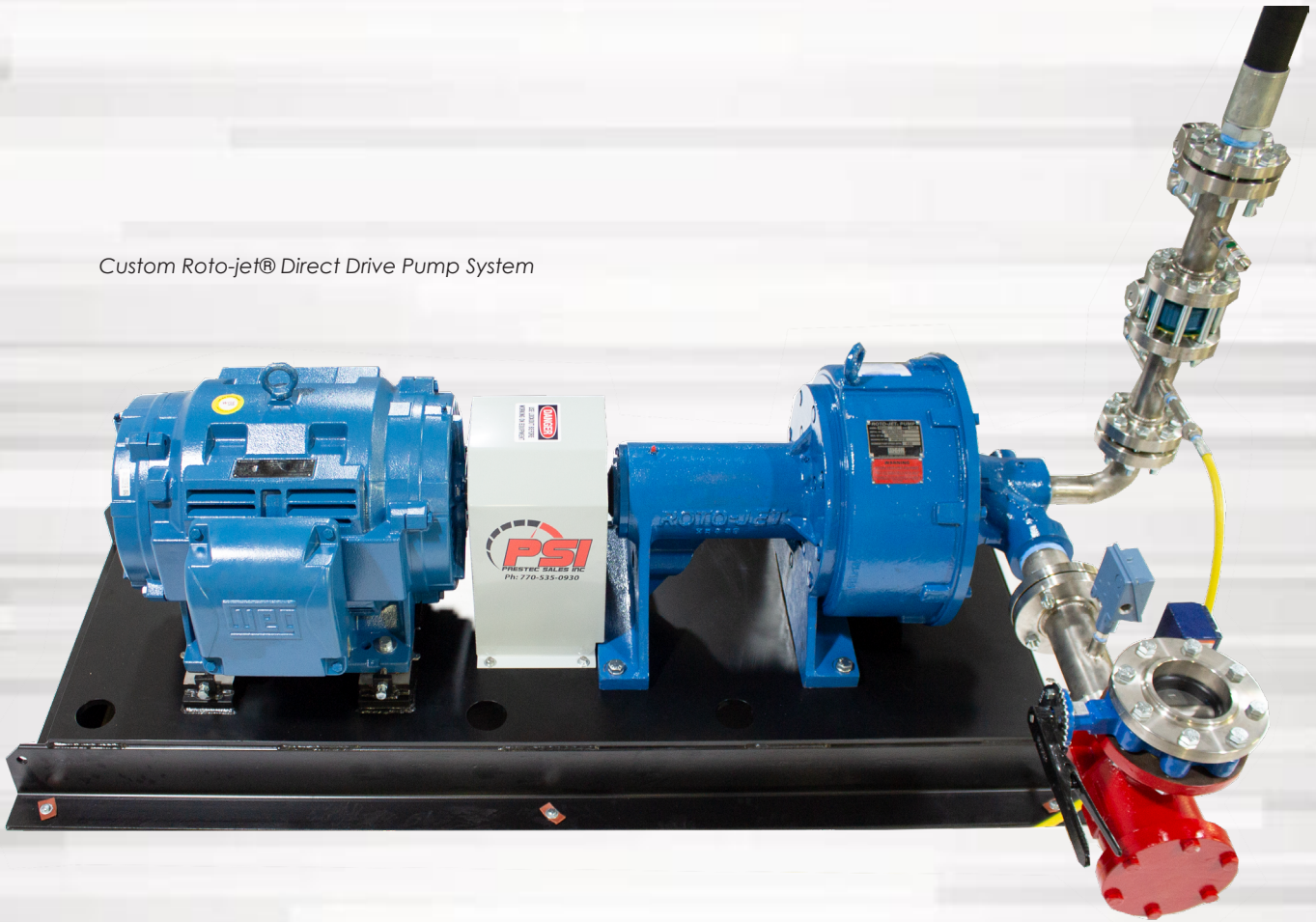
The Prestec Sales, Inc.™ Overhead Conveyor Lube System is designed to apply lube to the overhead conveyor chain. Regular usage extends the chain life and prevents rust build up.

The 16-gallon tank can be mobile or stationary. The tank is filled with lube then pressurized with compressed air to convey the lube from the tank to the overhead lube application headers.

KEY BENEFITS

- Covers Multiple Zones
- Mobile for convenient filling & storage
- Custom built to your specifications

Custom Roto-jet® Direct Drive Pump System



High Pressure Pump Systems

The patented Roto-jet® high pressure pickup tube pumps boast efficiency through simplicity. The single-stage pumps are hydraulically stable and offer benefits to minimize or eliminate wear and failure with the option of a belt or direct drive. The minimal design features two working parts: a rotating case and a stationary pickup tube which provides superior suction pressure and reduces bearing contamination.

Roto-jet® direct drive pumps also allow for greater flexibility with an easily adjustable pressure performance by simply changing the motor speed. Slower controlled startups and shutdowns help eliminate stress on your system components.

Prestec Sales, Inc.™ builds custom systems to meet your specifications.



Custom Roto-jet® Belt Drive Pump System

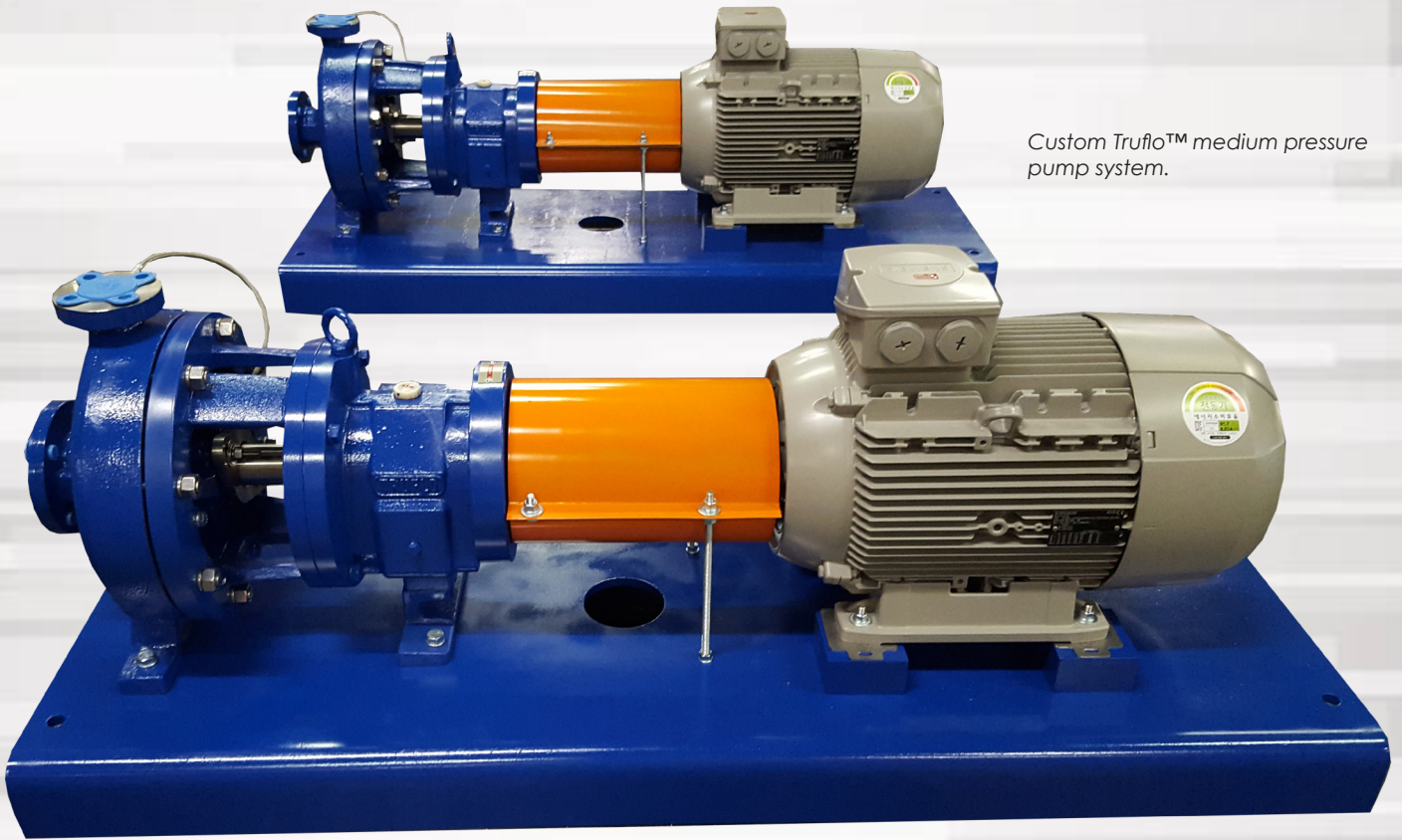
FEATURES & BENEFITS

DIRECT DRIVE KEY BENEFITS

- Direct coupled
- VFD driven only uses energy when needed to maintain pressure
- Production & sanitation modes

BELT DRIVE KEY BENEFITS

- Durable and rugged design
- Has minimal moving parts



Custom TruFlo™ medium pressure pump system.

Medium Pressure Pump Systems

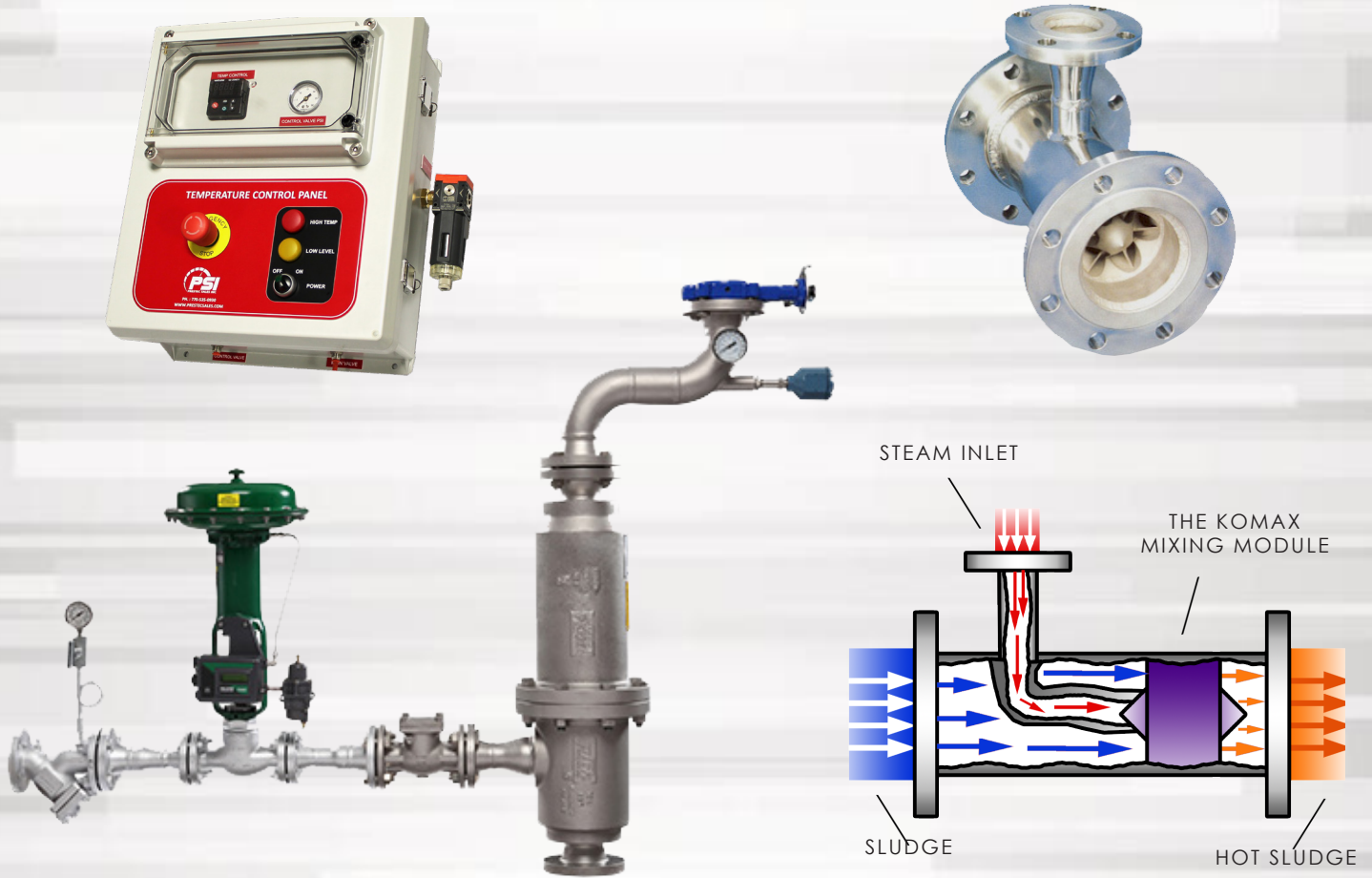
FEATURES & BENEFITS

The medium pressure pump systems are commonly used in washdown areas that require higher volume to move soils and solids. Single-stage design provides years of reliable service.

Our team works one-on-one with you to design the most effective system to fit your requirements.

KEY BENEFITS

- Direct coupled
- Optional VFD driven, only uses energy when needed to maintain pressure
- Production and sanitation pressure operating modes.



Steam Heating Systems

FEATURES & BENEFITS

The Prestec Sales, Inc.™ provides pre-packaged solutions for your steam heating applications. Our team of heat transfer experts works closely with you to create a one-of-a-kind system for both constant and variable demand process requirements.

Systems provide accurate temperature control allowing for more efficient use of resources. The precision and efficiency of our systems help reduce fuel costs, water consumption, and conserves energy.

KEY BENEFITS

- Reduce water hammer, vibration and noise
- Sanitary applications
- Energy-efficient heat transfer
- Pre-packaged for easy install



Model shown is the PSBM-50.

Shackle Brushing Machines

FEATURES & BENEFITS

The Prestec Sales, Inc.™ PSBM-30 and PSBM-50 Shackle Brushing Machines are the solution for more efficient workflow by virtually eliminating the need for hand scrubbing of the shackles and components.

With a durable stainless steel construction, the PSBM-30 and PSBM-50 are designed to minimize wasted time and resources while providing high-level sanitization of the line.

The 6-brush PSBM-30 and the 10-brush PSBM-50 use special grit-impregnated bristles that clean and polish the shackles which reduces down time due to dirty shackles or overhead chain. The reliable pneumatic lift system guarantees accurate placement every time.

KEY BENEFITS

- Labor reduction
- Hot water reduction
- Reduces total water usage
- Reduces load on wash down pump and hot water systems

OPTIONAL ADD-ONS

- Rinse Manifold
- Combination Application Header
- Air Lock Safety



Rotary Screen Water Reclaim

FEATURES & BENEFITS

The Prestec Sales, Inc.™ Rotary Screen is an internally-fed water reclaim system that successfully removes solids from process water flow with a fine mesh wedge wire screen.

This robust system has a 12-gauge stainless steel housing with a 2-hp drive motor and gearbox. Its high capture rate provides premium solid-liquid separation to effectively manage water usage and meet sustainability requirements.

As influent enters the horizontally mounted screen, the centrifugal action of the drum forces process water through the mesh into the holding tank below. Particles are separated from the water and discharged out the exit end.

The system includes a main electrical control panel for pump, level and safeties. Tank penetrations for pump suction, level probes, drain, water quick fill and overflow come standard.

KEY BENEFITS

- 2-hp drive motor and gearbox
- Fine mesh wedge wire screen filtration
- Hinged overhead lids for easy cleanup
- Requires minimal attendance
- Reduces downtime and costly maintenance
- Less water usage
- Customizable to specific application
- Electrical control panel for pumps, levels and safeties
- VFD motor and drive with main breaker
- Stainless steel spray bar with nozzles



POC-2.1 Odor Control System

FEATURES & BENEFITS

The Prestec POC-2.1 Odor Control System effectively controls offensive odors from facilities through the use of a tank-based water misting system. The POC-2.1 provides metered dosing and injection of chemical neutralizers into the surrounding area to clean and protect the environment from airborne odors resulting from industrial processes.

Our Odor Control System is fitted with a 30-gallon reservoir that is part of the bypass and decreases excess heat generation which can be commonly found on traditional systems that bypass directly into the suction line.

The dual-cycle capabilities of the POC-2.1 provide flexibility with both a continuous mode and cycle mode giving you more control over chemical costs. Being VFD driven, it offers smooth acceleration and deceleration on the pump, promoting longer pump life by eliminating hard starts and stops.

The POC-2.1 is equipped with push-lock fittings making installation easy. Prestec makes maintaining the system virtually worry-free with the built-in Pump Maintenance Reminder application to prompt when regular service is due.

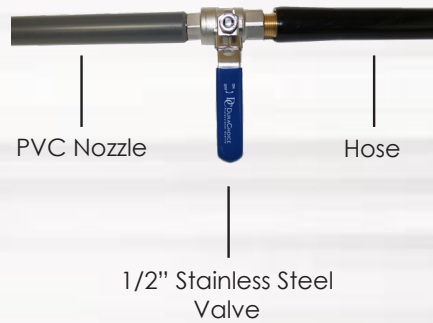
The POC-2.1 has stainless steel construction and is operated by a heavy-duty pump with WEG motor. Larger systems can be custom built to fit a variety of applications.

KEY BENEFITS

- Controls noxious odors
- Precision dosing
- Superior vapor trapping
- Helps maintain compliance
- Reduced maintenance
- Extended pump life

SPECIFICATIONS

- Tubing Rated 1,100 psi
- 2.1 gpm pump
- 1,000 psi max operating pressure with 115V motor



Optional Add-ons:



Central Foam Stations PCF-75

FEATURES & BENEFITS

The Prestec PCF-75 Central Wall Mount Foaming Station is a stainless steel foam applicator which creates an adherent mixture with excellent dwell time.

With longer dwell times, detergents are able to penetrate and break down build-up on surfaces and eliminate hand cleaning.

The PCF-75 is used in conjunction with the Prestec Central Foam System that will deliver a premixed detergent and water solution to the central foaming station or a preexisting pump fed system.

The PCF-75 projects 25-30 feet allowing for cleaning at various distances.

REQUIREMENTS

Pressure	35 to 125 psi
Flow	2.0 gpm @ 40 psi
Supply Line	1/2"
Compressed Air	up to 4 CFM
Hose	1/2" x 75'



Included with foamer unit:



Optional Add-ons:



Wall-Mount Foamers PF1000-HP and PF1000-LP

FEATURES & BENEFITS

The Prestec Sales, Inc. wall-mount foaming and sanitizer stations are stainless steel foam applicators which create an adherent mixture with excellent dwell time. With longer dwell times, detergents are able to penetrate and break down build-up on surfaces and eliminate hand cleaning.

Available models include the PF1000-HP high pressure (300-1,000 psi) and the PF1000-LP low pressure (60-300 psi) to accommodate a variety of uses. All units deliver a premixed detergent and water solution to the foaming station or a preexisting pump fed system and will project 25-30 feet allowing for cleaning at various distances.

Included with each unit are assorted metering tips, air and water supply hose and vinyl tubing with Viton® foot valve.

KEY BENEFITS

- Easy-to-mount design
- Durable stainless steel construction
- Excellent coverage zone of 25-30 feet projection
- Optional Accessories: 1/2" x 75' foam hose assembly and stainless steel hose rack



Gas-fired Heaters

Kemco & RBI

FEATURES & BENEFITS

KEMCO

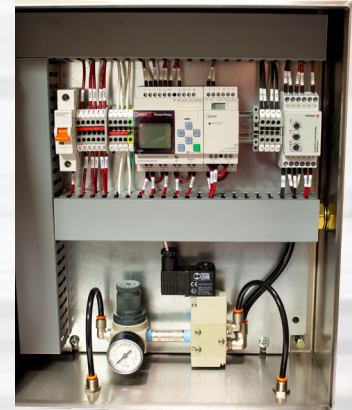
Kemco provides high efficiency, environmentally friendly water heaters, heat recovery, and water treatment systems, guaranteeing performance that will save water, labor, energy, sewer, and chemical costs with a 99.7% efficient water heating capability.

RBI

RBI offers the most complete line of finned copper tube boilers and water heaters available today. Models are available to fit any commercial application, from atmospheric to fan-assisted sealed combustion in a wide 100,000 to 4,000,000 BTU capacity range. These units are designed to be durable and provide easy installation and maintenance.

KEY BENEFITS

- Premium fuel and sewer cost savings
- Best in class heaters for ROI
- Minimal release of NOx while maintaining optimal thermal efficiency



Electrical Control Panels

FEATURES & BENEFITS

Prestec Sales, Inc.™ designs and builds custom control panels. Let us take your design concept and fabricate it into a fully-functioning system that is easy to use and will provide long service life.

The easy-to-read panel overlays with LED lights give quick visuals to system operation. Panels can also be outfitted with custom cooling options to extend service life of the panel components.

KEY BENEFITS

- Easy-to-read panel overlays
- Custom built onsite
- Technical support and training services provided upon request
- Nema 4X enclosures for use in harsh environments

KURIYAMA HOSE

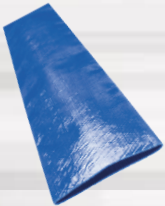
Prestec Sales, Inc.™ is an authorized distributor for Kuriyama® brand hose and accessories. Kuriyama specializes in thermoplastic, rubber and metal hose products, along with accessories including couplings and fittings.



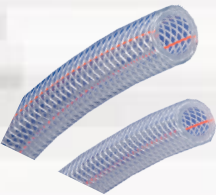
Tigerflex® WT Series material handling hose is a food-grade PVC hose that can handle the transfer of liquids such as potable water. This standard duty hose is designed with a convoluted outer cover with rigid PVC helix which provided increased flexibility, and its transparent construction to allow for visibility of material flow. The Tigerflex® innovative design boasts the ideal combination of lightweight, flexibility and durability. It is FDA and USDA compliant for use in meat and poultry plants.



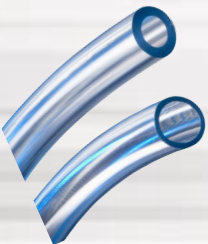
Kuri Tec Spray/Transfer hose, also known as Ag hose, is made from premium quality PVC and is an economical option for your spray and transfer needs. It is reinforced with high tensile strength yarn in a spiral pattern and features a ribbed PVC cover to reduce drag and increase flexibility. This non-marking hose is lightweight, longitudinally reinforced, and has a pin-pricked cover to vent vapor and help prevent ballooning.



The Kuriyama Vinylflow® hose is a premium PVC Layflat drip irrigation and water discharge hose is constructed with a smooth cover and reinforced with a polyester yarn spiral wrap. Its unique construction is designed with UV inhibitors to reduce aging and weather checking.



Kuri Tec Clearbraid® Series is a lightweight non-marking hose made for use in the food and beverage industry. Clearbraid® is phthalate-free and made from NSF-51 certified material that is crystal clear for high visibility of product flow. It is yarn reinforced longitudinally to reduce elongation under pressure.



Kuri Tec Klearon® Series is a clear PVC tubing designed with a smooth interior to reduce sediment buildup. It features a blue tint to enhance clarity and is made from FDA and USDA compliant, phthalate free material which is NSF-51 certified.

Custom assemblies available upon request.



GATES WASHDOWN & GENERAL PURPOSE INDUSTRIAL HOSE

Prestec Sales, Inc.™ is an authorized distributor for Gates® brand industrial hose and fittings. These hoses are made for high pressures, built for water blasting, and designed to clean even the dirtiest industrial surfaces. Gates pressure washer hoses can withstand the heavy-duty water pressure force your application demands, without abrasion, crushing, or kinking. Additionally, the hose cover is animal-fat resistant to extend life of the hose. All assemblies are made in-house by our specially trained hose technicians.

3/8" ASSEMBLIES

Specifications & Features:

- 3,000 psi
- Animal-fat resistant cover
- Male swivel on each end
- Bend restrictor on each end

Lengths Available: 50-ft 75-ft 100-ft

Colors Available:



1/2" ASSEMBLIES

Specifications & Features:

- 1,000 psi or 3,000 psi
- Animal-fat resistant cover
- Male swivel on each end
- Bend restrictor on each end

Lengths Available: 50-ft 75-ft 100-ft

Colors Available:



3/4" ASSEMBLIES

Specifications & Features:

- 3,000 psi
- Animal-fat resistant cover
- Male swivel on each end
- Bend restrictor on each end

Lengths Available: 50-ft 75-ft 100-ft

Colors Available:

Custom assemblies available upon request.





EZ-Blaster™ Spray Gun RF-1000

FEATURES & BENEFITS

The exclusive Prestec Sales, Inc.™ EZ-Blaster™ RF-1000 high pressure spray gun is designed to reduce waste by increasing water efficiency. Its fortified design prevents alterations to adjust the flow rate, and to prevent excessive water usage.

By maintaining the proper flow, the EZ-Blaster protects against damage to the sanitation washdown pump system.

The EZ-Blaster reduces costly over usages and assists in complying with water-use regulations, saving money and promoting environmental awareness and conservancy.

The smooth, ergonomic design provides comfort and style to the spray gun.

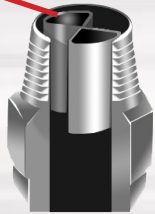
KEY BENEFITS

- Compact nozzle barrel length easily fits in tight spaces
- Ergonomic design for more comfortable use
- Low-friction trigger which reduces pulling force
- Stainless steel nozzle with vane to reduce turbulence
- High-impact spray with uniform distribution

OVERVIEW

The exclusive Prestec Sales, Inc. EZ-Blaster™ RF-1000 spray gun comes outfitted with a long wear life stainless steel nozzle with a stabilizing vane. The internal stabilizing vane reduces liquid turbulence and provides high-impact spray for uniform distribution and maximum cleaning power.

Internal Stabilizing Vane



EZ-Blaster™ Spray Gun RF-1000

REQUIREMENTS

Temperature	300° F
Pressure	900 psi
Flow	9.45 GPM
Inlet	3/8" FNPT
Outlet	1/4" FNPT

FLOW RATE CAPACITY (Approximate)

		500 PSI	750 PSI	900 PSI
Capacity Size	15	5.3 GPM	6.49 GPM	6.9 GPM
	20	7.1 GPM	8.7 GPM	9.45 GPM
	30	10.61 GPM	12.99 GPM	14.21 GPM

OPTIONAL ADD-ONS



3/8" or 1/2" High Pressure Washdown Hose
Available in 50-, 75- and 100-ft lengths in yellow, blue, or gray.



Stainless Steel Hose Hanger



Quick Disconnects



EZ-Blaster™ TD-3 Spray Gun

FEATURES & BENEFITS

The Prestec Sales, Inc.™ EZ-Blaster™ TD-3 high pressure spray gun with nozzle head is designed to reduce waste by increasing water efficiency. The Prestec Sales, Inc. exclusive triple duty nozzle head* has a larger water stream which provides a flooded sweeping action to move heavier soils and solids while still managing usage.

By maintaining the proper flow, the EZ-Blaster TD-3 protects against damage to the sanitation washdown pump system. The EZ-Blaster TD-3 reduces costly over usage and assists in complying with water-use regulations, saving money and promoting environmental awareness and conservancy. The smooth ergonomic design provides comfort and style to the spray gun.

**Triple duty nozzle head assembly patent pending.*

KEY BENEFITS

- Triple-action water pattern
- 3 stainless steel nozzles with vanes to reduce turbulence
- Ergonomic design for more comfortable use
- Low-friction trigger which reduces pulling force
- High-impact spray with uniform distribution

OVERVIEW

The exclusive Prestec Sales, Inc.™ EZ-Blaster™ TD-3 spray gun comes outfitted with a nozzle head containing three long-wear life stainless steel nozzles with stabilizing vanes. The internal stabilizing vane reduces liquid turbulence and provides high-impact spray for uniform distribution and maximum cleaning power.



*Triple duty nozzle head assembly patent pending.

Internal Stabilizing Vane



EZ-Blaster™ TD-3 Spray Gun

FLOW RATE CAPACITY (Approximate)			
Capacity Size	500 PSI	750 PSI	900 PSI
	3-08	8.55 GPM	10.5 GPM

OPTIONAL ADD-ONS



3/8" or 1/2" High Pressure Washdown Hose
Available in 50-, 75- and 100-ft lengths in yellow, blue, or gray.



Stainless Steel Hose Hanger

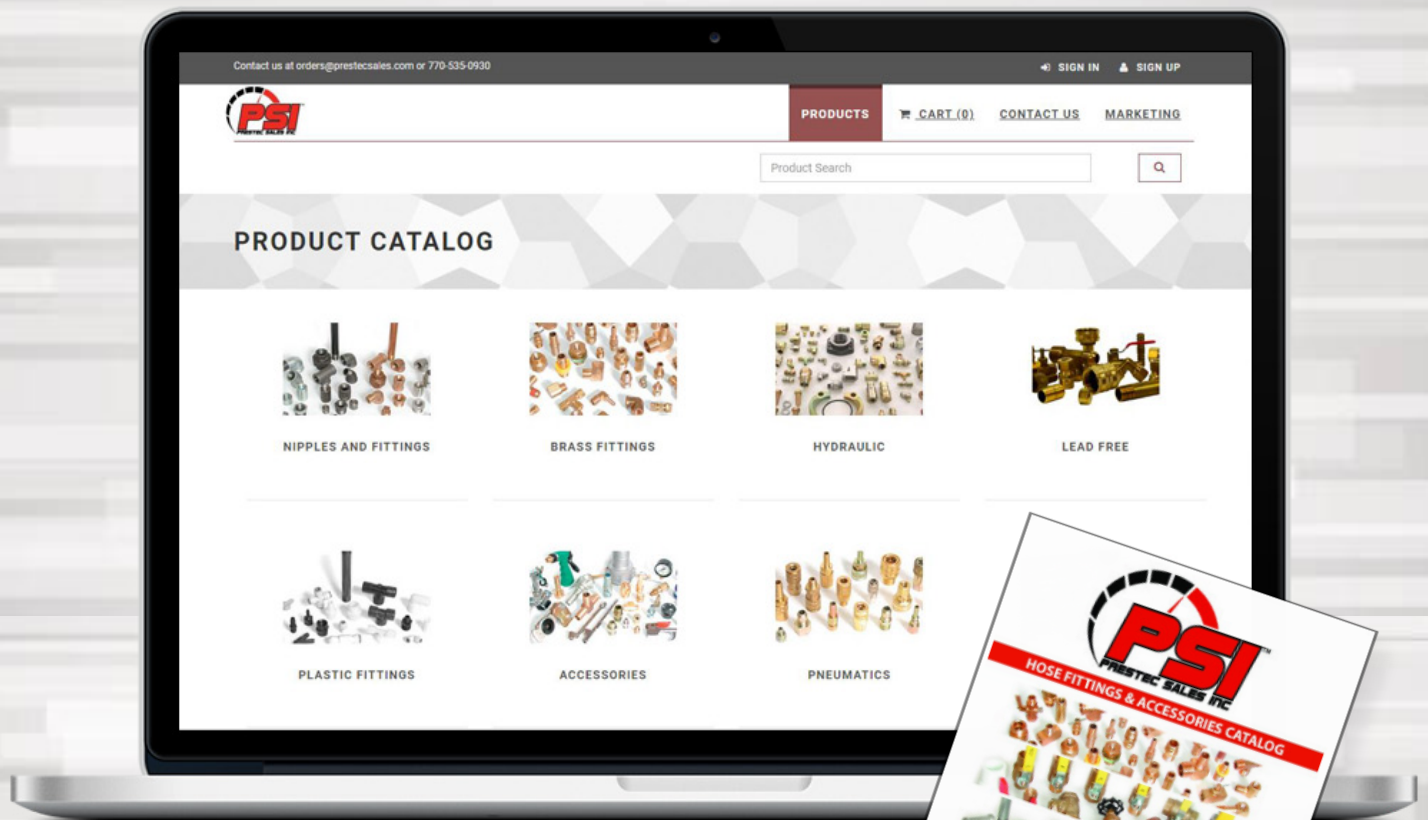


Quick Disconnects

PRESTEC SALES HOSE FITTINGS & ACCESSORIES CATALOG

Now you can shop hose fittings and accessories right from your computer. Visit our online fittings and accessories catalog to browse our selection of over 30,000 parts, add them to your cart and check out with ease.

Click below to visit our
Hose Fittings & Accessories Online Store



THE PRESTEC SERVICE YOU EXPECT

Our friendly and knowledgeable customer service representatives manage your online orders with personalized attention from receipt through fulfillment to ensure your order is processed efficiently and accurately.



[Click here to download the catalog PDF.](#)

To request a print catalog, call 770-535-0930.



Get Plugged In

We value our relationship with you and are always looking for ways to make your experience with us more streamlined, efficient and informational. Here are some ways that Prestec Sales, Inc.™ makes staying connected easier.

ONLINE

Visit our website www.prestecsales.com to learn more about us, browse our products and services, download helpful resources and fill out our contact form for quick information. Also, don't forget we now have an online shop for hose fittings and accessories. Click [here](#) to shop.

EMAIL

Emailing us at orders@prestecsales.com puts you in touch with our friendly and knowledgeable customer service team. Request a quote, place an order, or even ask questions about projects or products.

PHONE

Our experts are available by phone to discuss project needs, product details and answer any questions you have. You can reach our office at 770-535-0930.

AT THE OFFICE

Our office is conveniently located in Gainesville, GA, in the heart of the area known as the Poultry Capital of the World! Stop by weekdays from 8:00 a.m. - 5:00 p.m. Click [here](#) for directions.

ONSITE VISIT

Our experts are available by appointment to visit with you onsite to discuss your next project, provide select training, or assist with troubleshooting issues. Give our office a call to schedule your onsite visit at 770-535-0930.

SERVICE...It's What Makes the Difference.™



2481 Hilton Drive, Suite 7
Gainesville, GA 30501
770-535-0930

www.prestecsales.com

