

Water Treatment Technologies

Product Catalog

Innovative Dispensing Solutions

- 📍 An ongoing commitment to meeting individual customer needs
- 📍 Worldwide support in multiple languages
- 📍 Worldwide knowledge and compliance with local regulatory requirements
- 📍 100% production conformity – every unit tested before shipping
- 📍 Extensive expertise in corporate customization
- 📍 Product design service & rapid prototype production
- 📍 Comprehensive after-sales follow-up & support
- 📍 Manufactured, sold and serviced in your region

Our Locations:

Australia, Brazil, China, Thailand, United Kingdom & USA

About us



A broad choice - whatever the application

For 50 years, Hydro Systems has been developing and introducing products that improve chemical performance, reliability and our customers' bottom lines.

We build long-lasting relationships with customers and offer custom, industry-leading solutions that positively impact your business. Hydro is committed to delivering superior customer support and ensuring unparalleled responsiveness to customers around the world. Our commitment to cutting-edge technology, customer satisfaction and safer operations makes us the leader in the chemical proportioning and dispensing industry.

In addition to our North American corporate office, we have manufacturing and distribution facilities in Australia, Brazil, China and the United Kingdom. No matter where you are, Hydro products are always within your reach.

The Changing Tide of Water Treatment Technology



While liquid chemicals remain the most popular solution, more and more water treatment specialists are turning to solid chemicals to treat the water in their boiler and cooling-tower systems.

Historically speaking, solid chemicals have played a prominent role in water treatment, specifically in the first half of the 20th century when they were used to prevent the corrosion and biological growth that could lead to catastrophic boiler failures.

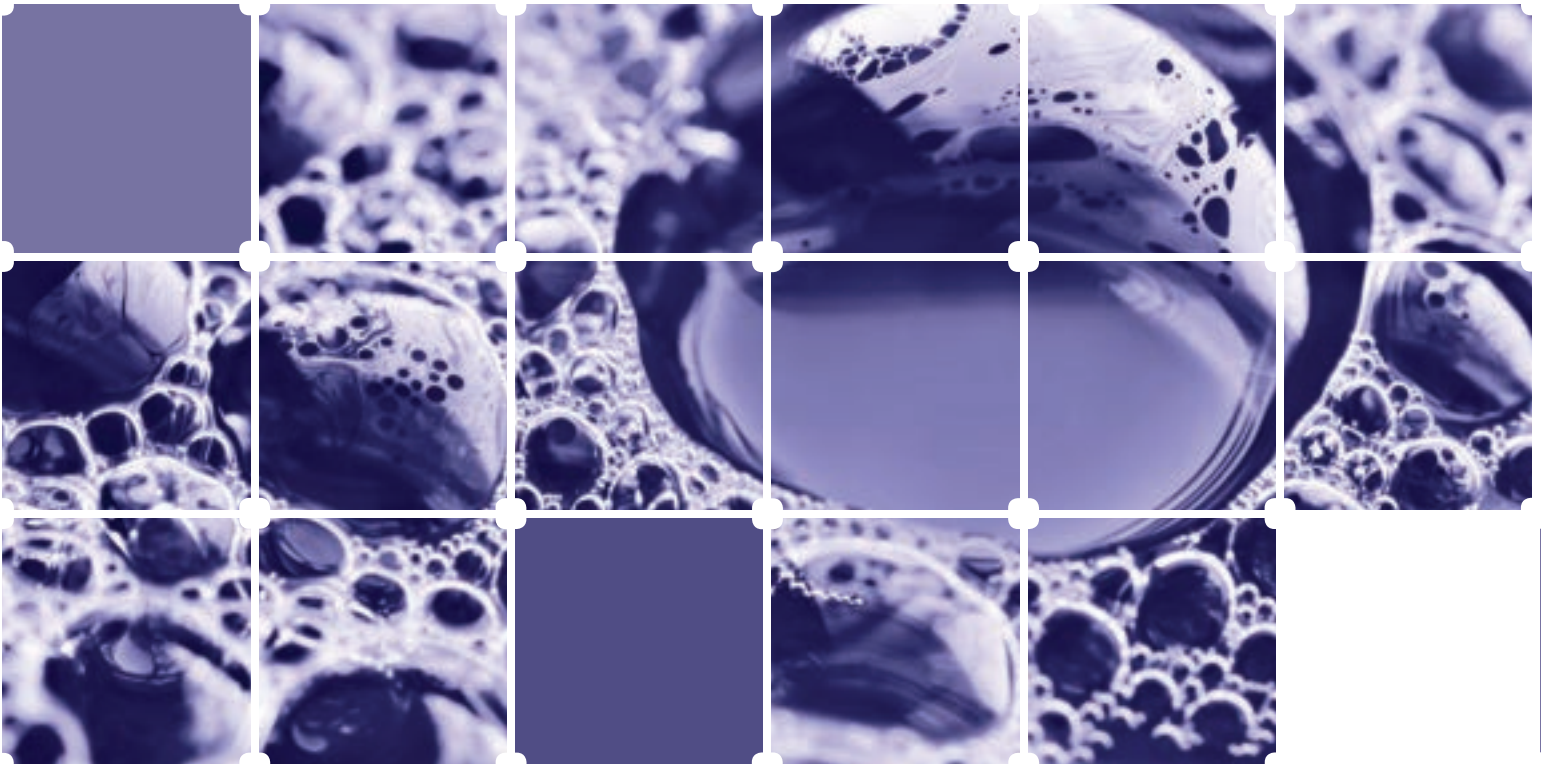
By mid-century, however, liquid chemicals, buoyed by their ability to be easily blended, had replaced their solid counterparts.

While liquid chemicals remain the top choice among specialists, the tide appears to be turning back toward the use of solid chemicals for important reasons including: reduction of water, shipping and disposal costs, inventory space required, etc.

A few of the many advantages of solid dissolver technology:

- Reduces shipping costs
- Reduces inventory space
- Reduces disposal costs
- Eliminates drum-handling and disposal
- Reduces caustic discharge to sewer systems
- Reduces worker exposure to hazards
- Increases energy-efficiency
- Enhances a company's sustainability profile, better positioning them as "green" suppliers and operators

One Demanding World; One Versatile Technology



You understand the demands of treating water in boiler and cooling-tower systems.

As you contemplate the right equipment for the job, you know that the choice you make is not only about price, but about several other equally important factors: ease of operation, reliability, safety, energy efficiency and environmental compliance. Further, you must consider liquid versus solid chemicals; as these become a more popular choice among water treaters.

Hydro Systems understands this challenging paradigm. That's why, as the world's largest independent manufacturer of dilution, dosing and dispensing systems for concentrated chemicals, we've developed a versatile line of dispensing products for use with both solid and liquid water treatment chemicals in the toughest of applications. Easy to operate, safe, reliable, energy efficient and environmentally sensitive.

Controllers



Triton

Perfect for:

Multiple cooling towers
or tower/boiler
combo installations

Overview

There is only one model of the **Triton** Cooling Tower controller. It is equipped with 8 high capacity electro-mechanical relays, a sophisticated “all-in-one” flow switch, conductivity and temperature probe and 8 fully configurable digital inputs.

Every **Triton** controller also comes with an Ethernet port and two front panel USB ports - one for data stick downloads and the other for easy local connection to a computer.

Features

- Digital network features Plug’ N’ Play expansion with auto-detect of probes, relays and 4-20 mA
- Industry’s largest (5.7”) backlit, high-res, daylight readable display

System Advantages

One-step data download with USB “data stick”

Plug in a standard USB stick to download data, ready for you to analyze and graph.

Open, expandable architecture with digital network

Need more Relays? Need more Sensors? Need them far away from the main controller? With Triton’s digital expansion network, it is all “Plug’n’Play”!

Front panel “direct access” buttons

Direct Access buttons enable navigation to main menu items with a single key stroke.

Triton All-in-One (AIO) Probe

Measures temperature, conductivity and flow with a patent-pending thermal flow switch that is specially designed not to overheat.

- Easily manage config files, system updates and data logs via USB
- Web interface & communication standard. Multiple ways to program; USB, Ethernet, front panel, laptop, remote web

Pre-programmed operation modes

The controller is pre-programmed with simplified cooling tower water treatment programs for faster operation.

Context-aware “help” key

An integrated HELP button allows access to immediate, selection specific help information.

Power failure alarm

An interruption in AC power activates a visible warning light on the front panel. Alarm e-mails and SMS messages can also be sent to notify of power failure duration.



Models & Specifications

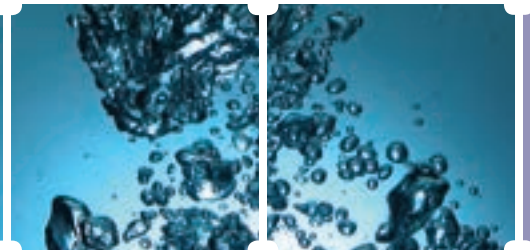
Model	Description
AIO Probe	Conductivity / temperature / flow all-in-one
pH	pH probe with Tee
ORP	ORP probe with Tee
REB	Relay Expansion Box (4 digital inputs with 4 corded relays)
Analog input/output boards	4 - 20 mA input/output

Panel Mount Systems



Triton Panel Mount

Hydro offers a standard line of base panel mounts for most installation needs. Contact your sales representative for more information on standard and custom option boards.



Twist II Clean Filter

Twist II Clean is an easy to use, flushable sediment filter. It can remove sand and organics from the incoming water supply. Perfect for panel mount systems to instantly flush flow loop manifolds without removing filter.

Twist II Clean removes the need for manual cleaning and does not require the water supply to be turned off.



Low Level Advisor

The Low Level Advisor uses patent-pending, conductive plastic probes and a custom designed circuit to ensure you are alerted prior to a container running empty. The remote advisor can be placed as far as 1,000 feet from the chemical location.

Mercury WT

Overview

The **Mercury WT** Water Treatment System effectively inhibits corrosion, scale and chemical build-up within hot water boilers, cooling towers or other on-site dilution applications. By combining incoming water with up to five chemicals, **Mercury WT** Water Treatment Systems keep equipment operating efficiently.

Features

- Splash proof, IP-34 enclosure
- Easy access, spring-loaded pump spinners
- Simple, three button programming
- Factory pre-wired
- Auto voltage sensing (no transformers)

Perfect for:

Individual day tanks and blending for large boilers



System Advantages

Flexible programming

The Mercury WT provides customized dispense times, chemical types and dose amounts to match your specific usage requirements.

Easy and economical

The Mercury WT reduces service calls with an easy-to-understand digital readout, three button operation and highly water resistant controller.

Adjustable and expandable

The Mercury WT works in various applications to meet current needs while allowing future expansion with add-on 4th and 5th pumps.



Models & Specifications

	Description	Part #	Flow Rate
Model			oz / min
Mercury WT	Single pump	00-07760-710	6
Mercury WT	Dual pump	00-07760-720	6
Mercury WT	Three pump	00-07760-730	6
Mercury WT	Three pump with timer	00-08533-730	6



Hydro[®]
systems company

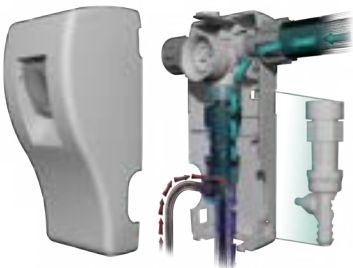
Technology



Solid Dissolver technology



Venturi technology



Volumetric technology



Three Precise Technologies Perfect For Your Operation

Our **solid dissolver** technology allows for hands-free, non-electric emulsifying of solid jar and disc chemicals. Solid dissolvers accurately make down small batches of dilute chemical ready for injection to tower or boiler.

Our expansive product line includes several electric and non-electric, manually-actuated **venturi** dispensers. These dispensers offer a cost-effective way to ensure that products are dispensed accurately and consistently, on demand. Venturi feed systems can deliver high volume of chemical into the flow loop against pressures up to 30 PSI or any sump system.

Volumetric technology is the perfect choice when injecting additives into water streams. These water-driven injectors are designed to reliably operate in the most challenging conditions, making them perfectly suited for use in remote cooling towers where connection directly to the make-up line will ensure non-electric chemical feed to the tower. Hydro volumetric injectors deliver precise amounts of diluted chemicals and sanitizers, and more importantly, peace of mind to the operators.

Solid Dissolver Technology

Solid chemical is diluted by water sprayed up into an inverted bottle of chemical or the bottom of a chemical disc. This 'make-up' process leads to the dissolution of the solid chemical product and the filling of a reservoir with diluted chemical.

This diluted chemical is fed into the system from the reservoir. As the level of the reservoir lowers, an internal primary float drops, triggering a primary solenoid valve which activates the water spray once again. The reservoir will then refill with diluted chemical raising the primary float until it reaches the shut-off point and closes the solenoid, thereby deactivating the spray. This cycle will continue automatically based on demand in the system.

Benefits of solid dissolvers:

- Prevent scale
- Prevent corrosion
- Prevent biological issues
- Reduce exposure risks
- Reduce shipping costs
- Easy to handle
- Reduces space demands
- Easy container disposal

590

Overview

The model **590** solid dissolver provides diluted solution of one product held in an integrated reservoir, ready for on demand pumping when indicated by the system controller. The system provides a back-up sump/float technology to prevent spills in case of an overflow condition.

Features

- No electricity required
- Uses low cost, reliable float technology
- Includes back-up reservoir and float assembly for overflow protection
- Includes adjustable pressure gauge and filter

System Advantages

Uses reliable, time-proven float technology

No electric solenoids to burn out, no transformers to fail when current spikes and there are no reed switches to gum up and stick.

Easy to install

4 bolt attachment, hook the float to the valve, attach the water inlet and the solution discharge tubing – that's it.

Models & Specifications

Model	Description	Operating Pressure	
		psi (min. - max.)	bar (min. - max.)
590	Single product solid dissolver, float-activated, with primary reservoir and back-up float system/reservoir	30 - 90*	2 - 6

* For optimum performance, operated at 30-40 psi.

Perfect for:

Roof-top & penthouse installations where overflow/leak protection is paramount.



- Atmospheric siphon breaker included for backflow protection
- Translucent body allows viewing of water level in reservoir
- Takes advantage of the reduced transportation and storage costs and worker safety benefits of solid chemistry

Integrated back-up protection

The unit contains a second reservoir and float assembly which is activated should the primary reservoir overflow. The back-up feature shuts off the water flow to prevent system overflow.

Specialized nozzle technology

Four spray patterns are available to ensure optimum dissolve rates.

591

Perfect for:

High volume accounts where visit frequency is key.



Overview

The **591** Continuous Feed single product solid dissolver provides diluted solution of one solid product (inhibitor) held in an integrated reservoir, ready for on-demand pumping when indicated by the system controller. The unit holds two containers of the treatment product, and continually switches back and forth between containers when it senses an empty container.

Features

- “Toggle-logic” continuously switches to full container
- Uses low cost, reliable float technology
- Includes adjustable pressure gauge and filter
- Translucent body allows viewing of water level in reservoir
- Includes back-up reservoir and float assembly for overflow protection
- Takes advantage of reduced transportation and storage costs, and worker safety benefits of solid chemistry
- Optional remote alarm connections

System Advantages

Integrated back-up protection

The unit contains a second reservoir and float assembly which is activated should the primary reservoir overflow. This back-up feature shuts off the water flow to prevent system overflow.

Specialized nozzle technology

Four spray patterns are available to ensure optimum dissolve rates.

Models & Specifications

Model	Description	Operating Pressure	
		psi (min. - max.)	bar (min. - max.)
591	Single product dual jar system, float activated with automatic “toggling” feature. Contains back-up float systems reservoir.	30 - 90*	2 - 6

* For optimum performance, operated at 30-40 psi.



592

Perfect for:

Non-electric, high volume accounts



Overview

The High Output single solid dissolver provides diluted solution of one solid product (inhibitor or biocide) held in an integrated reservoir, ready for on-demand pumping when indicated by the system controller. Water sprays into both containers of the treatment product simultaneously for more rapid dissolving.

Features

- No electricity required
- Uses low cost, reliable float technology
- Includes back-up reservoir and float assembly for overflow protection
- Includes adjustable pressure gauge and filter
- Translucent body allows viewing of water level in reservoir
- Takes advantage of the reduced transportation and storage costs, and worker safety benefits of solid chemistry

System Advantages

Integrated back-up protection

The unit contains a second reservoir and float assembly which is activated should the primary reservoir overflow. This back-up feature shuts off the water flow to prevent system overflow.

Specialized nozzle technology

Four spray patterns are available to ensure optimum dissolve rates.

Two product containers extend Replacement interval

Both containers of the treatment product are sprayed simultaneously, allowing the reservoir to fill more quickly. In addition, the two containers allow replacement of product to be extended to double the time of single container units, for accounts with low visit frequency or high chemical use.

Models & Specifications

Model	Description	Operating Pressure	
		psi (min. - max.)	bar (min. - max.)
592	High output, single product solid dissolver, sprays both product containers simultaneously	30 - 90*	2 - 6

* For optimum performance, operated at 30-40 psi.



Pump Shelf

Add a molded pump shelf to your solid dissolver system for a clean professional look. Pump shelves are available in custom colors.

593

594



593



594

Perfect for:

Remote towers
and day tanks

Overview

The **593** solenoid-activated Gravity Feed system provides diluted solution of one solid product (inhibitor or biocide) as demanded by the system controller. The diluted solution is gravity-fed directly into the tower or boiler. The **594** Timer

Activated Gravity Feed systems provides the same accurately diluted solution as the **593**, but has the added convenience of being programmed and activated by an internal battery.

Features

- Designed for “open” (non-pressurized) boiler feed tanks or tower sumps
- Bowl and solenoid (or timer) mounted on panel for integrated functioning
- 593 includes adjustable pressure gauge and filter
- Atmospheric siphon breaker included for backflow protection (**593**)
- Low Voltage - 24VAC solenoid (**593**)

System Advantages

Easy to install

4 bolt attachment, attach the water inlet and the solution discharge tubing—that’s it.

Economical performance

By integrating components and using direct gravity-feed, the unit provides the lowest cost method of taking advantage of all of the benefits of solid chemistry.

Specialized spray nozzle technology

Four spray patterns are available to ensure optimum dissolve rates.

Time-based feeding (**594**)

Select the times to feed chemical by programming the easy-to-use timer, which opens the water valve and sprays the solid chemical. No electricity required.

Models & Specifications

Model	Description	Operating Pressure	
		psi (min. - max.)	bar (min. - max.)
593	Gravity-feed, one product solid dissolver, with solenoid	30 - 90*	2 - 6
594	Gravity-feed, one product solid dissolver, with timer	30 - 90*	2 - 6

* For optimum performance, operated at 30-40 psi.

595

Perfect for:

Small footprint for installations that have tight wall constraints



Overview

The **595** single solid dissolver provides diluted solution of one solid product held in an integrated reservoir, ready for on-demand pumping when indicated by the system controller.

Features

- No electricity required
- Uses low cost, reliable float technology
- Includes adjustable pressure gauge and filter
- Atmospheric siphon breaker included for backflow protection
- Translucent body allows viewing of water level in reservoir
- Takes advantage of the reduced transportation and storage costs, and worker safety benefits of solid chemistry

System Advantages

Uses reliable, time-proven float technology

No electric solenoids to burn out, no transformers to fail when current spikes and there are no reed switches to gum up and stick.

Easy to install

4 bolt attachment, hook the float to the valve, attach the water inlet and the solution discharge tubing—that's it.

Specialized nozzle technology

Four spray patterns are available to ensure optimum dissolve rates.

Models & Specifications

Model	Description	Operating Pressure	
		psi (min. - max.)	bar (min. - max.)
595	Single product solid dissolver, float-activated, with integrated reservoir	30 - 90*	2 - 6

* For optimum performance, operated at 30-40 psi.



Multi-disk Tower

Overview

The **Multi-disk Tower** systems provide all of the benefits of the standard Hydro dissolvers plus the ability to add more chemical at any time and the ability to deliver more chemical between service visits. Choose this option when ordering your new dissolver, or retrofit your existing Hydro Systems Solid Dissolver to enhance the consistency of your water treatment regimen, and/or use solids at larger accounts.

Features

- Allows dissolver to hold 20-40 lbs (9-18 kg) of solid chemical
- Available as a stand-alone, or retrofit to any existing Hydro solid dissolver system
- Translucent cover for easy chemical level viewing

System Advantages

Multi-disk design

This unique design maintains a constant distance from the spray nozzle to the chemical surface delivering the consistent chemical concentrate on applications demand. The Multi-Disk design also allows you to load new disks at anytime - there's no need to wait until the chemical container is empty.

Now use solids with larger accounts

The ability to hold 20-40 lbs (9-18 kg) of chemical with

Models & Specifications

Model	Description	Operating Pressure	
		psi (min. - max.)	bar (min. - max.)
590MD	Multi-Disk, single product solid dissolver, float-activated, back-up float system	30 - 90*	2 - 6
592MD	Multi-Disk, non-electric, continuous feed system, single product dual bowl, back up float system	30 - 90*	2 - 6
593MD	Multi-Disk, gravity-feed, single product solid dissolver with solenoid	30 - 90*	2 - 6
594MD	Multi-Disk, gravity-feed, single product solid dissolver with timer	30 - 90*	2 - 6
595MD	Multi-Disk, single product solid dissolver, float-activated	30 - 90*	2 - 6
10094926	Multi-Disk retrofit kit		

* For optimum performance, operated at 30-40 psi.

Perfect for:

Expanding your inhibitor chemical volume up to 20 lbs of discs



- No electricity required
- Translucent body allows viewing of water level in reservoir
- Take advantage of the reduced transportation and storage costs, and worker safety benefits of solid chemistry

one dissolver allows solids to be used on larger water treatment programs.

No chemical container

Because there is no jar, there is no need to worry about when to change it. Simply add more chemical disks during the normal service visit, or as needed.

Venturi Technology

Venturi technology (the vacuum created by manipulating the speed of a stream of water) is used to mix chemicals with water. The incoming water stream is restricted by a nozzle, while the speed of the outgoing water is decreased by the

inverted funnel shape at the bottom of the venturi. The result is a vacuum in the middle, where the chemical is sucked into the water stream. Venturi technology works from ordinary water pressure available in most buildings.

585 586 587 588

Overview

The **HydroDose** Eductor System provides an innovative delivery method for both solid and liquid chemicals. It injects large quantities of liquids directly to tower or day tank.

Features

- Includes adjustable pressure gauge and filter
- Uses low power consumption, 24 VAC solenoids
- Eductor Technology means less maintenance
- Includes chemical injector valves

System Advantages

Faster chemical injection

At rates up to 600 gpd / 2271 l/day, the **HydroDose** quickly delivers any chemical. Perfect for slug feeding biocides. Much more cost-effective than diaphragm pumps that only deliver at a fraction of that rate.

Designed for chemical resistance

All parts that come in contact with the chemical are made from polypropylene and polyethylene to provide maximum chemical resistance.

Models & Specifications



Perfect for:

Replacing your diaphragm pumps with reliable high volume eductor feed systems

Simple set-up

HydroDose eductors can discharge into an open sump or any line with 30 psi or less back pressure. Most applications simply use the existing injection point.



Model	Description	Flow Rates (Max.)		Operating Pressure	
		gpd	l/day	psi (min. - max.)	bar (min. - max.)
585	Single product eductor system	600	2271	40 - 90*	2.75 - 6.20
586	Single product eductor mounted on a board with a calibration column	600	2271	40 - 90*	2.75 - 6.20
587	Three product eductor system	600	2271	40 - 90*	2.75 - 6.20
588	Three product eductor system mounted on a board with a calibration column	600	2271	40 - 90*	2.75 - 6.20

598

599



Perfect for:
Small boilers; treats every bit of make-up feed water accurately

Overview

The solenoid-activated In-line Feed system provides diluted solution of one product (inhibitor or biocide) as demanded by the system controller. The diluted solution is fed directly into the tower or boiler.

Features

- Durable stainless steel cabinetry
- Includes sampling port for concentration testing
- No electricity or pumps required

System Advantages

Consistent Feeding

The Venturi Feed system is installed directly into the make-up line and treats every drop of water added to the system. This automatic process avoids the need for workers to remember to manually add treatment chemicals.

Seasonally Adjustable

Adjust the level of chemical injection, due to water source or seasonal water usage, quickly and easily by switching the Ultra-Lean Metering Device.

Easy to Install

The unit installs right into the feed line. No electricity required, no pumps, no motors—it's 100% water driven.

Accurate, Lean Concentrations

Chemical injection is controlled by the patented Ultra-Lean Metering Device. "Torturous Path" technology allows very small amounts of chemical to be accurately injected into the incoming water stream.

System Stability

Continuous feeding eliminates the spikes that normally occur with "slug-feeding". Dangerous periods where chemical protection is too low are avoided as well.

Models & Specifications

Model	Description	Flow Rate		Operating Pressure	
		gpm	l/m	psi (min. - max.)	bar (min. - max.)
598	Venturi injection unit, for open-feed systems	3.5	13.2	30 - 90	2 - 6
599	Venturi injection unit, for open-feed systems	6.0	22.7	30 - 90	2 - 6

Volumetric Technology

Fluid (water)-driven volumetric injectors work on the principle of proportional positive displacement, ensuring that just the right amount of chemical is injected, regardless of pressure and flow, into the water flow.

Unlike traditional electric pumps, **volumetric** injectors eliminate the need for electricity and can operate in remote areas. They are easy to install and maintain—making them ideal for low-flow injection applications.

Our **volumetric** injectors, for water treatment applications, work in a piston configuration. The water powered motor drives the action of the chemical pump, drawing the concentrate in to an integral mixing chamber and then to the outflow. The pump offers variable dilution ratios, enabling the user to determine the correct percentage of concentrate to water volume.

SuperDos

Overview

The **SuperDos** mid-high flow, fluid (water) diaphragm pump proportional injectors offer an ideal alternative to traditional electric technology. It is ideal for adding inhibitor directly into make-up water stream accurately. Treats all water to system regardless of pressure and flow.

General Specifications

Housing	Proprietary Engineered Composite Material
Dosing Accuracy	+/- 10% of Ratio
Repeatability	+/- 3% of Ratio
Max. Temperature	100° F (38° C)
Min. Temperature	34° F (1° C)
Max. Vertical Suction of Concentrate	3.6 m
Max. Horizontal Suction of Concentrate	15 m
Self-Priming	Yes
Seal Material Available:*	<ul style="list-style-type: none"> <li style="width: 50%;">• Aflas <li style="width: 50%;">• PAA Resistant <li style="width: 50%;">• Viton <li style="width: 50%;">• Teflon Coated <li style="width: 50%;">• EPDM
Maximum Viscosity	1,500 cP (Ex. Honey)
Recommended Accessories	140 Mesh (104 µ) Filter, Check Valve, Pressure Regulator, Flow Restrictor

* Contact your representative for specific chemical information



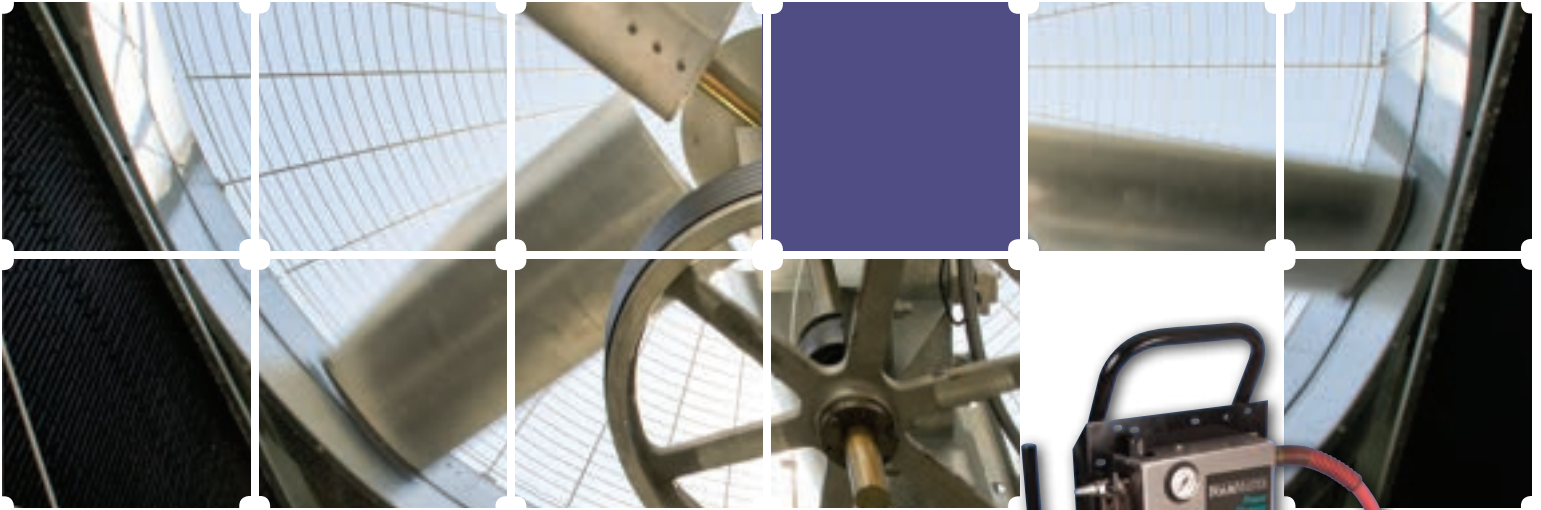
Perfect for:
Remote towers; non-electric volumetric pump treats all make-up to the tower accurately

Models & Specifications*

Model	Part #		Flow Rate		Operating Pressure		Injection Range	
	NPT	BSP	gpm	l/h	psi	bar	%	ratio
SuperDos 30 0.3%	113208	113708	0.15 - 30	34 - 6,800	5 - 100	0.34 - 6.9	0.025% - 0.3%	1:4000 - 1:333
SuperDos 30 2.5%	113209	113709	0.15 - 30	34 - 6,800	5 - 100	0.34 - 6.9	0.20% - 2.5%	1:500 - 1:40
SuperDos 30 2.5% WSP	113209WSP	113709WSP	0.15 - 30	34 - 6,800	5 - 100	0.34 - 6.9	0.20% - 2.5%	1:500 - 1:40
SuperDos 30 5.0%	113210	113710	0.15 - 30	34 - 6,800	5 - 500	0.34 - 6.9	0.4% - 5%	1:250 - 1:20

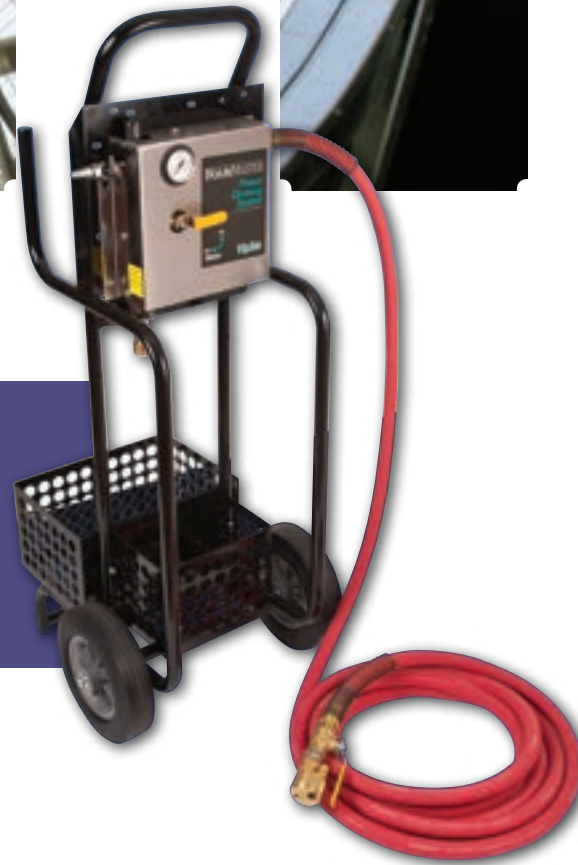
* This list represents the SuperDos models most commonly used in water treatment applications; other models are available. Contact your Hydro Systems representative for more information.

Tower Cleaning Solutions



FoamMaster 890C

FoamMaster power cleaning systems automatically dilute concentrated cleaning products with water and use compressed air to generate a thick, rich, clinging foam. FoamMaster allows you to control air and water flow to deliver the foam thickness you need. It effectively cleans scale tower fill and also is great for dust remediation in mines. Contains rinse valve for final cleaning of solution from surface.



In-Room Coil Cleaner

The In-Room Coil Cleaner is a mobile, self-contained system designed for portable cleaning applications. It is perfect for internal air conditioning systems. The units provide both cleaning and sanitizing functions, as well as clean water rinsing through low pressure spray nozzles. The optional foaming nozzle provides a thick, rich foam for longer dwell time.



Hydro[®]
systems
A **DOVER**[™] COMPANY

In addition to our standard range of products for the Water Treatment industry, we also provide a comprehensive range of products and accessories as a distributor of Neptune Pumps and equipment.

The following pages are only a small selection of items available. Please contact us for further information on these and other products.

Metering Pumps

The PZ Series is the most flexible and accurate electronic diaphragm metering pump in the world!



Metering Pumps Models & Specifications

Model	Description	Flow Rate	Operating Pressure
	Solenoid Driven	gpd	psi
PZ	Basic model: manual type	10.5 - 38.0	60 - 220
PZD	Basic model with digital panel	137 - 205	30 - 45
PZI4	High output, externally controlled type (input only) 4-20 mA	137 - 205	30 - 45
PZI8	High output, externally controlled type (input & output) 4-20 mA	137 - 205	30 - 45
PZIG	Externally controlled type (input only)	5.4 - 20.6	30 - 140

Filter Feeders

Filter Feeders combine chemical addition and high capacity filtering in one piece of equipment. It's a convenient way to introduce solid or liquid chemicals into hot or cold water closed circulating systems.



Filter Feeders Models & Specifications

Model	Approx. Capacity*	Max. Pressure		Diameter
	Gal / L	psi	bar	in / cm
FTF-2HP	2.5 / 9.5	300	20.7	6 / 15.24
FTF-2DB	2 / 7.5	300	20.7	6 / 15.24
FTF-2CL	2.5 / 9.5	300	20.7	6 / 15.24
FTF-5HP	7.5 / 28	300	20.7	10 / 25.4
FTF-5DB	5 / 19	300	20.7	10 / 25.4
FTF-5CL	7.5 / 28	300	20.7	10 / 25.4
FTF-5150HP	7.5 / 28	300	20.7	10 / 25.4
FTF-5150CL	57.5 / 218	300	20.7	10 / 25.4

* At 200° F / 93° C Max.

By-Pass Feeders

By-Pass Feeders are a convenient method of introducing treatment chemicals into closed circulating water systems.



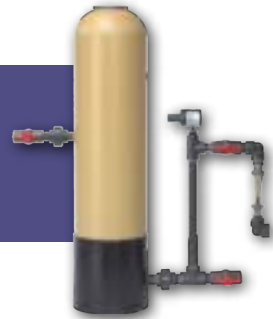
By-Pass Feeders Models & Specifications

Model	Approx. Capacity*		Max Pressure		Ship Weight
	Gal / L		psi	bar	lbs / kg
DBF-2HP	2 / 7.5		300	20.7	23 / 10.4
DBFC-2	2 / 7.5		300	20.7	23 / 10.4
DBF-5HP	5 / 19		300	20.7	38 / 17.2
DBFC-5	5 / 19		300	20.7	38 / 17.2
DBF-10HP	10 / 38		300	20.7	61 / 27.6
VTF-2HP	2 / 7.5		300	20.7	23 / 10.4
VTF-5HP	5 / 19		300	20.7	37 / 16.8
VTF-10HP	10 / 38		300	20.7	60 / 27.2
VTF-12HP	2 / 7.5		300	20.7	68 / 30.8
VTF-2X4HP	5 / 19		300	20.7	23 / 10.4
VTF-5X4HP	12 / 42		300	20.7	37 / 16.8
VTF-2-1	2 / 7.5		300	20.7	23 / 10.4
VTF-5-1	5 / 19		300	20.7	37 / 16.8

* At 200° F / 93° C Max.

Bromine Feeders

Bromine/By-Pass Feeders are a convenient and efficient way to properly feed solid biocides or other corrosive water treatment chemicals. These units easily handle ball, stick, tablet and other forms of bromine.



Bromine Feeders Models & Specifications

Model	Total Capacity	Flow Range
	lbs / kg	gpm / l/m
BT-15	15 / 6.8	1 - 10 / 3.8 - 37.8
BT-40	40 / 18.1	1 - 10 / 3.8 - 37.8
BT-42	42 / 19	1 - 10 / 3.8 - 37.8
BT-80	80 / 36.3	1 - 10 / 3.8 - 37.8
BT-160	160 / 72.5	1 - 10 / 3.8 - 37.8
BT-420	310 / 140.6	1 - 10 / 3.8 - 37.8

Global Headquarters

Hydro Systems Company

3798 Round Bottom Road
Cincinnati, OH 45244
USA

T 513-271-8800
F 513-271-0160

www.hydrosystemsco.com
www.hydro-watertreatment.com

European Office

Hydro Systems Europe

Unit 3, The Sterling Centre
Eastern Road
Bracknell, Berkshire
RG12 2PW
England

T +44 (0)1344 488880
F +44 (0)1344 488879

www.hydrosystemseurope.com

South America Office

Hydro Systems South America

Rua Mogiana, 172
Chácaras Reunidas
São José Dos Campos
12238-420SP
Brasil

T +55 12 3201 7707

www.hydronovabrasil.com

Asia Pacific Offices

Hydro Systems Asia Pacific

Unit A, 1 Kellham Place
Glendenning
NSW 2761
Australia

T +612 9625 8122
F +612 9625 8177

Hydro Systems Asia Pacific

Block #B, No. 51
Mindong Road
Pudong New Area
Shanghai, PRC 201209

T +86 21 61871037
F +86 21 68727775

Hydro Systems Asia Pacific

762/2 Room A540
Rama 3 Road
Bang Pong Pang
Yannawa, Thailand

T +66 2 295 2788
F +66 2 295 2785

